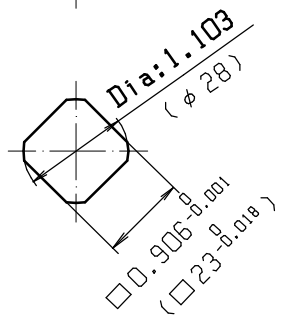
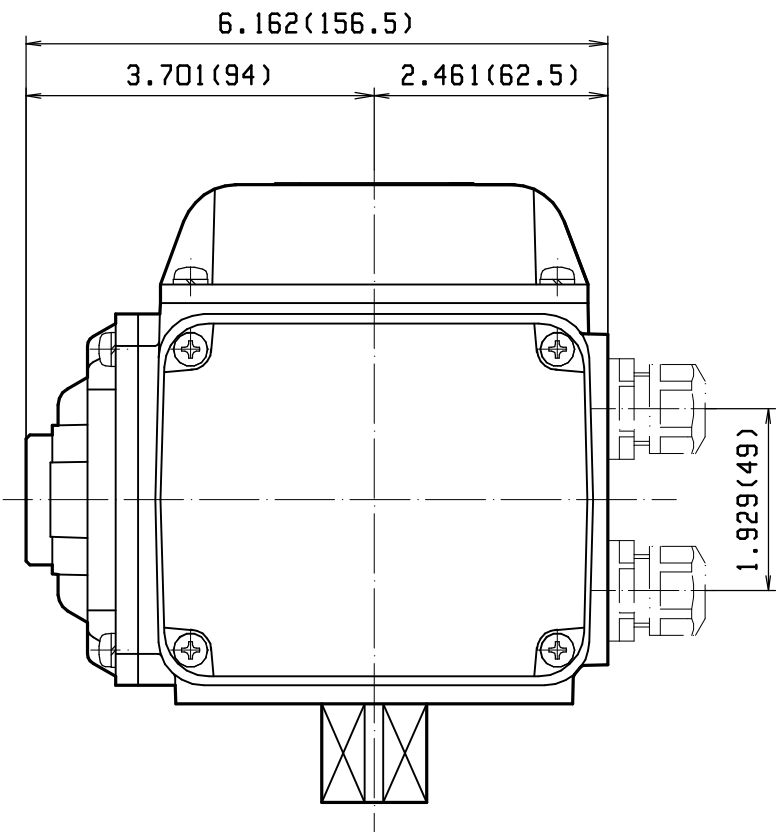
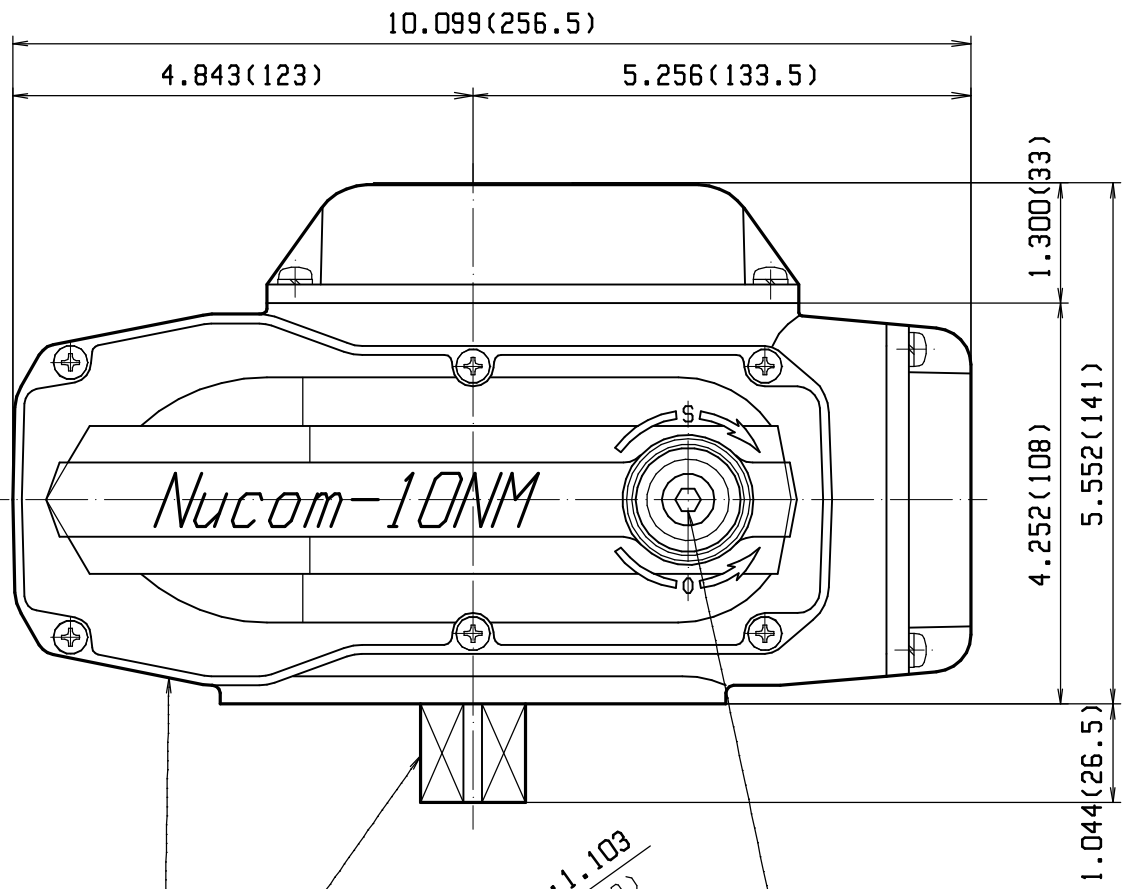
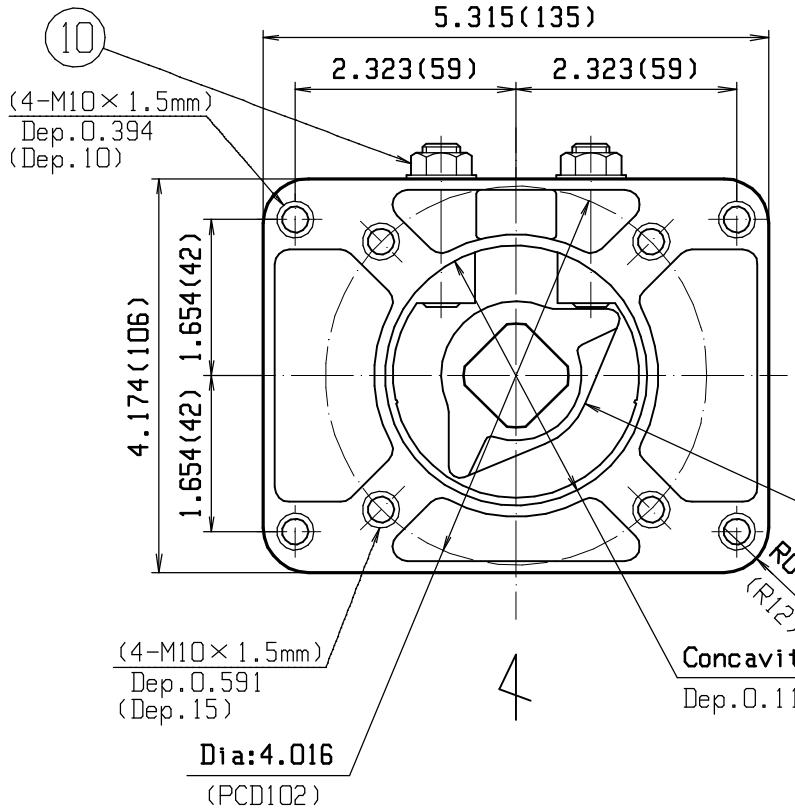
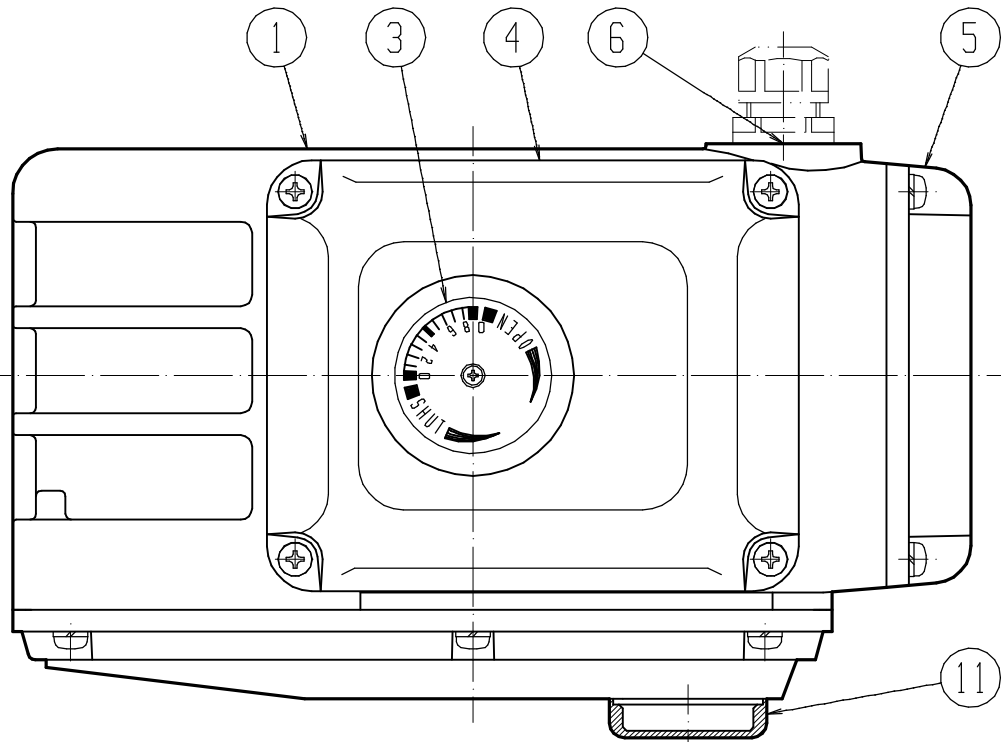


No.	NAME OF PART	Q'TY	M T L	REMARKS
1	Body	1	ADC12	
2	Driving unit cover	1	ADC12	
3	Apertometer 0~90° 10div.	1	GLASS	
4	Electric unit cover	1	ADC12	
5	Control unit cover	1	ADC12	
6	Wiring hole	2	-	NPT1/2
7	Manual handle shaft	1	S45C	
8	Output shaft	1	SUS304	
9	Stopper	1	ZnDC	
10	Stopper bolt/nut	2	SUS304	
11	Manual handle shaft rubber cap	1	NBR	



DRIVING UNIT SPECIFICATION	
POWER SOURCE	AC115V · 120V · 240V 60Hz Single phase
CONTROL ANGLE	0~90° degree.
OPERATION SPEED	25sec./90deg.
OUTPUT SHAFT TORQUE	3472in-lb (392.27N·m)
MANUAL OPERATION	Available
INPUT SIGNAL	4~20mA · DC
RESOLUTION	Over 1/250
BODY MATERIAL	Aluminium diecast
COATING COLOR	Gray(N-6)
BODY WEIGHT	8.5 kg

OUTPUT SHAFT POSITION : 0 %
DIMENSIONS ARE INCH(mm)

NAME: ACTUATOR OUTER DIMENSIONS	DATE	SIGN
MODEL: Nucom-10NM-30S	APRV.	
	CONF.	
	DRAW.	23, JAN, '02 K. SUGIYAMA
DR. No, 25010GE1		

KOEI INDUSTRY CO., LTD.